



Exos Bracing

Shaping Technology,
Shaping Lives



A Great Alternative to Conventional Casting!

Exos is the **only** bracing system offering you and your patients a removable, adjustable, reformable and waterproof solution for the treatment of fractures and other injuries requiring stabilisation.

Open it, Close it!

REMOVABLE

Although the Exos brace is custom fit to your patient, it can be easily removed, allowing:

- Examination of the fracture site
- Examination of a wound or an incision
- Assessment of muscle atrophy
- The ability to initiate rehabilitation therapy earlier in the healing process
- Skin and brace cleaning
- Sawless removal

*Comfortable,
lightweight material*

*Exclusive BOA®
Dynamic
closure system*

*Antimicrobial
treated*

*Washable and
waterproof*



BOA Locking Ring



Warm it, Fit it!

REFORMABLE

The Exos brace is completely reformable, allowing:

- Modification to accommodate anatomical changes as healing progresses
- Serial changes of position
- One brace throughout duration of treatment
- Less material waste

ADJUSTABLE

Exos uses the exclusive BOA® reel and lace dynamic closure system, allowing:

- Expansion to allow for initial swelling and to reduce the risk of Compartment Syndrome
- Tension modification for custom fit despite atrophy or changes in soft tissue
- Improved patient comfort and fit



1. Simply heat brace in oven for 3-5 minutes



2. Open and slide onto patient's limb



3. Gently mould and adjust for a comfortable fit



4. Use the reel and lace to tighten as needed



Features & Benefits

It Takes to Water

The Exos brace is waterproof*, allowing:

- Patients to continue their regular daily activities such as showering
- Children to remain active
- Athletes to continue water activities
- Use of blow dryer to quickly dry brace and skin

*Limitations and precautions apply. See product instructions for use



It's Easy to Clean

The Exos brace is designed for improved hygiene, allowing:

- Patients to hand wash and dry as needed
- Antimicrobial treated material to reduce odour
- Brace to be removed in order to clean skin or injury site

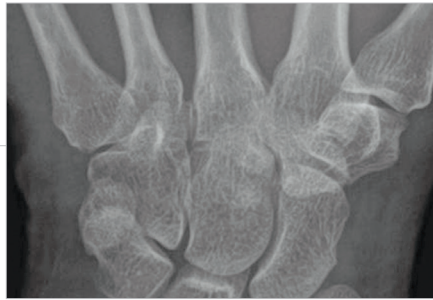




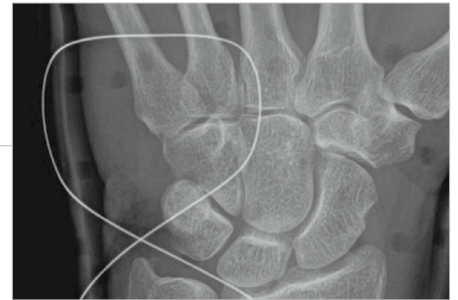
It's See-through & Lightweight

The Exos brace is radiolucent, allowing:

- X-rays to be taken without the removal of the brace
- Clinical assessment of fracture healing without the need for re-casting
- The Exos braces are significantly lighter than plaster casts or fibre glass ones



X-ray without brace



X-ray with brace

It's Original!

Exos braces come in a selection of different colours and patterns:

- Making them attractive and fun to wear, especially for children



1111 = Black



4444 = Pink



2293 = Spider





Ordering Information



WRIST BRACE WITH BOA
• Carpal bone & ligament injuries
• Stable wrist fractures



SHORT ARM FRACTURE BRACE
• Distal Radius Fractures (non-displaced)
• Wrist sprains, ligament injuries



SHORT ARM FRACTURE BRACE - OPEN THUMB
• Distal Radius Fractures (non-displaced)
• Wrist sprains, ligament injuries



BOXER'S FRACTURE BRACE
• 4th & 5th Metacarpal fractures



RADIAL GUTTER FRACTURE BRACE
• 2nd & 3rd Metacarpal fractures



THUMB SPICA FRACTURE BRACE
• Skier's Thumb, Bennett's & Rolando's fractures
• Scaphoid fractures



LONG THUMB SPICA WITH BOA
• Scaphoid fracture
• Radial or Ulnar wrist strain



LONG THUMB SPICA II
• Scaphoid, Bennett's & Rolando's fractures
• Radial or Ulnar wrist strain



SHORT THUMB SPICA II
• Skier's Thumb, Sprains, Dislocations
• Improved comfort and fit



EXTENDED SHORT THUMB SPICA
• Thumb IP joint hyperextension, Pin fixation



HAND BASED ULNAR GUTTER BRACE
• 4th & 5th Metacarpals or Phalanges fractures

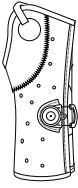


HAND BASED RADIAL GUTTER BRACE
• 2nd & 3rd Metacarpals or Phalanges fractures

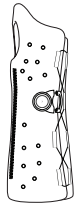


HUMERAL FRACTURE BRACE
• Mid-shaft, non-displaced fractures

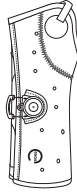
WRIST BRACE WITH BOA

Color options	Left	Right	Size
	221-21	221-22	XXS
	221-31	221-32	XS
	221-41	221-42	S
	221-51	221-52	M
	221-61	221-62	L
	221-71	221-72	XL


SHORT ARM FRACTURE BRACE

Color options	Left	Right	Size
	N/A	N/A	XXS
	310-31	310-32	XS
	310-41	310-42	S
	310-51	310-52	M
	310-61	310-62	L
	310-71	310-72	XL


SHORT ARM FRACTURE BRACE - OPEN THUMB

Color options	Left	Right	Size
	N/A	N/A	XXS
	312-31	312-32	XS
	312-41	312-42	S
	312-51	312-52	M
	312-61	312-62	L
	312-71	312-72	XL

BOXER'S FRACTURE BRACE

Black only	Left	Right	Size
	N/A	N/A	XXS
	325-31	325-32	XS
	325-41	325-42	S
	325-51	325-52	M
	325-61	325-62	L
	325-71	325-72	XL

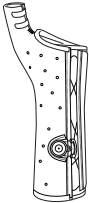
RADIAL GUTTER FRACTURE BRACE

Black only	Left	Right	Size
	N/A	N/A	XXS
	326-31	326-32	XS
	326-41	326-42	S
	326-51	326-52	M
	326-61	326-62	L
	326-71	326-72	XL

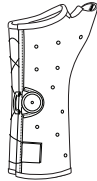
WRIST BRACE

Black only	Left	Right	Size
	N/A	N/A	XXS
	220-31	220-32	XS
	220-41	220-42	S
	220-51	220-52	M
	220-61	220-62	L
	220-71	220-72	XL

THUMB SPICA FRACTURE BRACE

Black only	Left	Right	Size
	N/A	N/A	XXS
	315-31	315-32	XS
	315-41	315-42	S
	315-51	315-52	M
	315-61	315-62	L
	315-71	315-72	XL

LONG THUMB SPICA WITH BOA

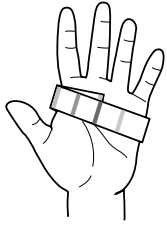
Color options	Left	Right	Size
	231-21	231-22	XXS
	231-31	231-32	XS
	231-41	231-42	S
	231-51	231-52	M
	231-61	231-62	L
	231-71	231-72	XL

LONG THUMB SPICA II

Black only	Left	Right	Size
	N/A	N/A	XXS
	232-31	232-32	XS
	232-41	232-42	S
	232-51	232-52	M
	232-61	232-62	L
	232-71	232-72	XL

SIZING CHART

Wrap Exos measuring tape around palm to measure size



SHORT THUMB SPICA II

Black only	Left	Right	Size
	N/A	N/A	XXS
	212-31	212-32	XS
	212-41	212-42	S
	212-51	212-52	M
	212-61	212-62	L
	212-71	212-72	XL

EXTENDED SHORT THUMB SPICA

Black only	Left	Right	Size
	N/A	N/A	XXS
	211-31	211-32	XS
	211-41	211-42	S
	211-51	211-52	M
	211-61	211-62	L
	211-71	211-72	XL

PEDIATRIC SHORT ARM FRACTURE BRACE


Color options	Left	Right	Size
	311-11	311-12	XXXS
	311-21	311-22	XXS

SIZE	CENTIMETRES	INCHES
XXXS	14.5 - 16.5 cm	5¼" - <6½"
XXS	16.5 - 18.5 cm	6½" - <7¼"
XS	18.5 - 20 cm	7¼" - <8"
S	20 - 23 cm	8" - <9"
M	23 - 25.5 cm	9" - <10"
L	25.5 - 28 cm	10" - <11"
XL	> 28 cm	> 11"

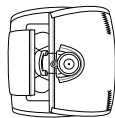
HAND BASED ULNAR GUTTER BRACE

Black only	Left	Right	Size
	N/A	N/A	XXS
	125-31	125-32	XS
	125-41	125-42	S
	125-51	125-52	M
	125-61	125-62	L
	125-71	125-72	XL

HAND BASED RADIAL GUTTER BRACE

Black only	Left	Right	Size
	N/A	N/A	XXS
	126-31	126-32	XS
	126-41	126-42	S
	126-51	126-52	M
	126-61	126-62	L
	126-71	126-72	XL

HUMERAL FRACTURE BRACE

Black only	Left	Size
	330-40	Small
	330-50	Medium
	330-60	Large

DJO Global | 1a Guildford Business Park | Guildford | Surrey | GU2 8XG | UNITED KINGDOM

www.DJOglobal.eu



⁺
MOTION IS MEDICINE[®]